





HMJ 10 S 15 M

Features & benefits


- Toe height adjustable in 3 positions: 25, 100 and 175 mm
- Protected against ejection of the plunger
- Telescopic support legs
- Duplex Power coating
- Duo Power Ring concept

Hydraulic Pumps

page 139

Hydraulic Hoses

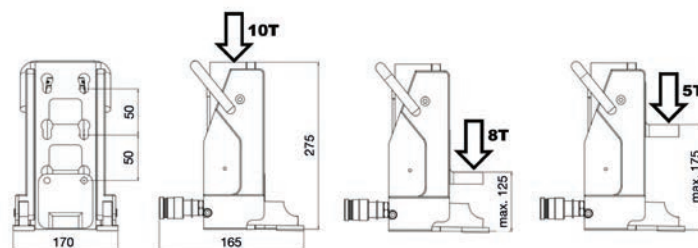
page 166

Pressure Gauges

page 171

Machine Lift - Spring Return


model	HMJ 10 S 15 M
art no	100.062.004
max. working pressure	bar/Mpa 720 / 72
tonnage	t 10
stroke length	mm 150
closed height	mm 275
capacity (head)	kN/t 100 / 10.2
capacity (toe), min.	kN/t 49 / 5
capacity (toe), max.	kN/t 78.5 / 8
required oil content (effective)	cc 208
return type	spring
connection	A 118
weight, ready for use	kg 18.5





TJ 8 S 13

Features & benefits


- Anti-skid profile on the toe
- Usable in all positions
- Compact construction, low weight
- Minimum tip clearance 18.5 mm
- Toe can be rotated 360°

Hydraulic Pumps

page 139

Hydraulic Hoses

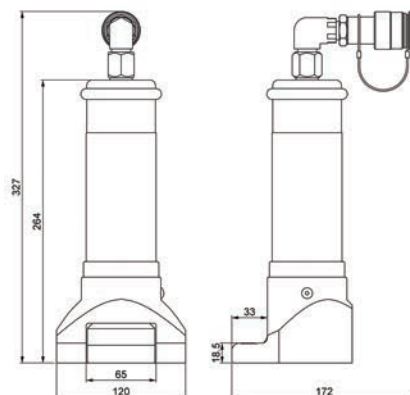
page 166

Pressure Gauges

page 171

Toe Cylinder - Spring Return


model	TJ 8 S 13
art no	100.112.102
max. working pressure	bar/Mpa 720 / 72
tonnage	t 8
stroke length	mm 130
closed height	mm 319
capacity (toe), min.	kN/t 88.3 / 9
required oil content (effective)	cc 207
return type	spring
connection	A 118
weight, ready for use	kg 6.5





HVLW 16 S 2



Features & benefits



- 100% vertical lifting movement; prevents misalignment of load
- Automatic mechanical retraction of lifting plate
- Minimum insertion space of 9 mm
- Vertical lifting stroke of 20 mm at each step

Standard supplied with



- Safety block
- Step block
- Grease pistol
- Grease cartridge Molycote®
- Plastic carrying / storage box

Hydraulic Pumps

page 139

Hydraulic Hoses

page 166

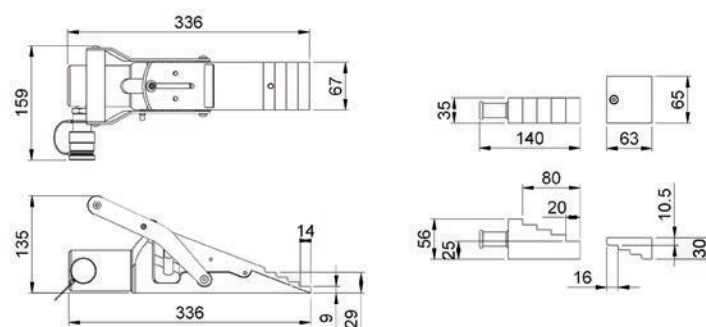
Pressure Gauges

page 171

Vertical Lifting Wedge - Spring return



model	HVLW 16 S 2
art no	100.112.104
max. working pressure	bar/Mpa 720 / 72
tonnage	t 16
min. insertion space	mm 9
lifting stroke	mm 20
max. spreading force	kN/t 156.6 / 16
required oil content (effective)	cc 75
return type	spring
weight, ready for use	kg 8.8





HW 1000



Features & benefits



- Compact
- Lightweight
- Anti-skid profile on wedge arms
- Usable in all positions

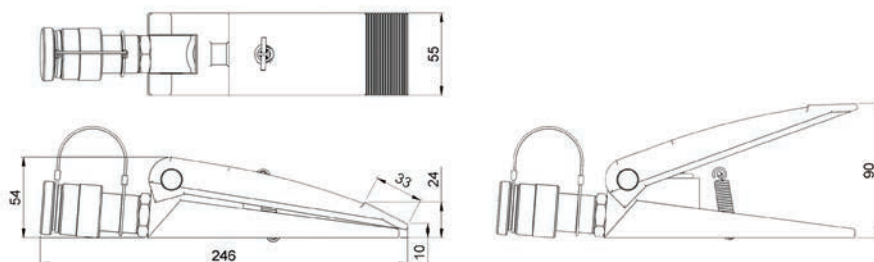
Hydraulic Pumps
Hydraulic Hoses
Pressure Gauges

page 139
page 166
page 171

Wedge - Spring Return



model	HW 1000	
art no	100.562.009	
max. working pressure	bar/Mpa	720 / 72
tonnage	t	1
min. insertion space	mm	15
lifting stroke	mm	90
max. spreading force	kN/t	10 / 1
required oil content (effective)	cc	10
return type	spring	
weight, ready for use	kg	2.1





HWJ 25 U



Features & benefits



- Minimum insertion space of 6 mm
- Compact construction
- Low weight
- Anti-skid profile on wedge blades
- Usable in all positions

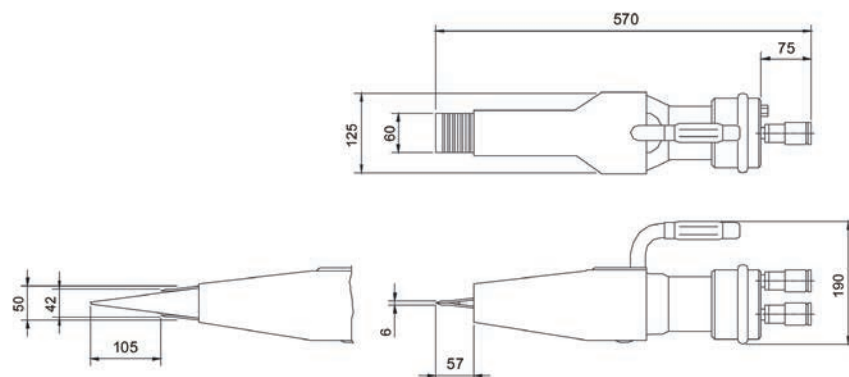
Hydraulic Pumps
Hydraulic Hoses
Pressure Gauges

page 139
page 166
page 171

Wedge - Hydraulic Return



model	HWJ 25 U	
art no	100.102.021	
max. working pressure	bar/Mpa	720 / 72
tonnage	t	25
min. insertion space	mm	6
lifting stroke	mm	44
max. spreading force	kN/t	253 / 25.8
return type	hydraulic	
required oil content (press)	cc	328
required oil content (retract)	cc	217
weight, ready for use	kg	8.1




Features & benefits


- Made of aramid reinforced nitril rubber NBR
 - No corrosion
 - Durable
- Reinforced with 3 aramide inlays
 - Lightweight
 - Highly flexible
 - Proven durability
- Revolutionary non-slip design
 - Maximum grip on all surfaces
 - Interlocking when 2 bags are placed on top of each other
- Unique lower profile edges; easy insertion under all circumstances
- CE-icons; optimal safety for the user
- Light reflecting labels on top side; better visibility in dark environment which improved safety and user friendliness
- Centring cross on both sides; easy and safe positioning

Standard supplied with


- "Autolock" couplers; quick connection with automatic double locking system
- Carrying straps on HLB 40 and HLB 67

Available on request


- Lifting capacity / height diagrams per model

Lifting Capacity / Height Diagrams	page	109
Hoses	page	110
Operating Valves	page	111
Accessories	page	112
Control Sets	page	113

Lifting Bags - Lifting Bags


model		HLB 1	HLB 3	HLB 5	HLB 10	HLB 12	HLB 18
art no		350.321.003	350.321.004	350.321.006	350.321.007	350.321.008	350.321.009
max. working pressure	bar/Mpa	8 / 0.8	8 / 0.8	8 / 0.8	8 / 0.8	8 / 0.8	8 / 0.8
max. inflation height	mm	80	130	150	215	225	240
thickness incl. profile	mm	22	22	22	25	25	25
max. lifting capacity	kN/t	10 / 1	35 / 3.6	50 / 5.1	100 / 10.2	120 / 12.2	180 / 18.4
air content (8 bar)	l	6.3	16.2	22.5	76.5	90	171
water content (8 bar)	l	0.7	1.8	2.5	8.5	10	19
min. bursting pressure	bar/Mpa	32 / 3.2	32 / 3.2	32 / 3.2	32 / 3.2	32 / 3.2	32 / 3.2
weight, ready for use	kg	0.6	1.5	2.0	3.8	5.0	6.8
dimensions (LxW)	mm	150 x 150	228 x 228	270 x 270	380 x 380	408 x 408	660 x 360


Features & benefits


- Made of aramid reinforced nitril rubber NBR
 - No corrosion
 - Durable
- Reinforced with 3 aramide inlays
 - Lightweight
 - Highly flexible
 - Proven durability
- Revolutionary non-slip design
 - Maximum grip on all surfaces
 - Interlocking when 2 bags are placed on top of each other
- Unique lower profile edges; easy insertion under all circumstances
- CE-icons; optimal safety for the user
- Light reflecting labels on top side; better visibility in dark environment which improved safety and user friendliness
- Centring cross on both sides; easy and safe positioning

Standard supplied with


- "Autolock" couplers; quick connection with automatic double locking system
- Carrying straps on HLB 40 and HLB 67

Available on request

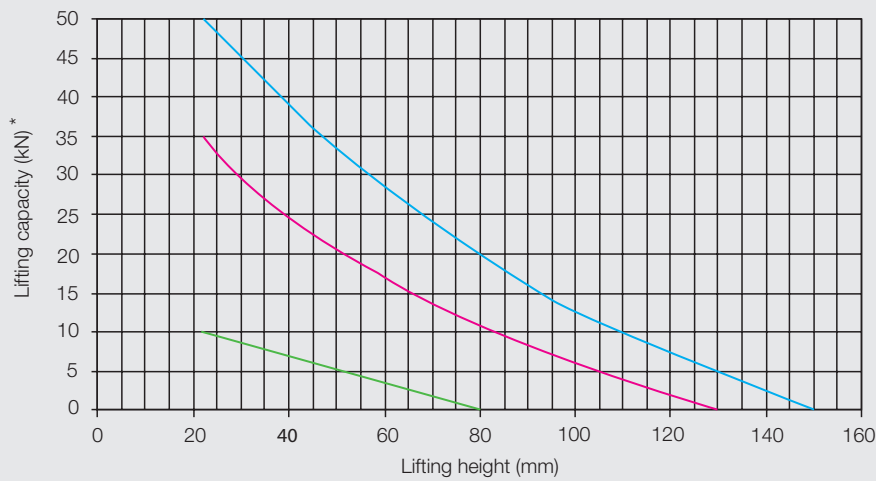

- Lifting capacity / height diagrams per model

Lifting Capacity / Height Diagrams	page	109
Hoses	page	110
Operating Valves	page	111
Accessories	page	112
Control Sets	page	113

Lifting Bags - Lifting Bags

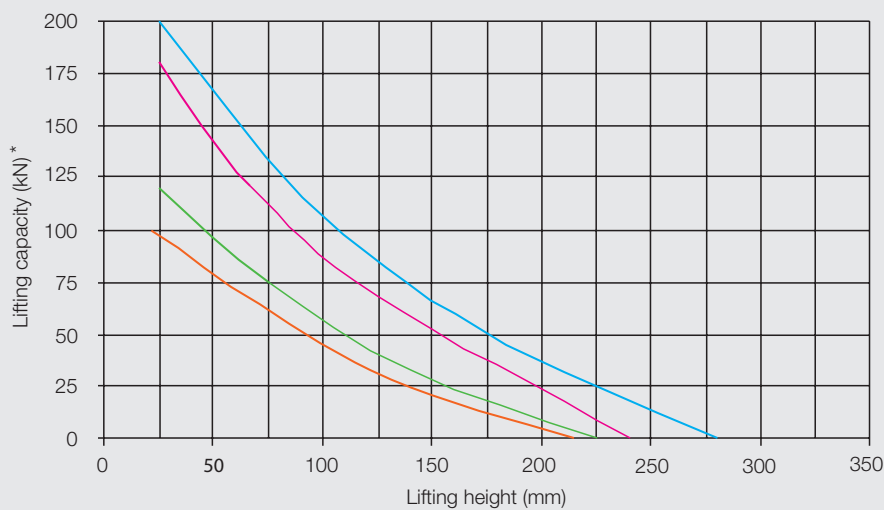

model		HLB 20	HLB 24	HLB 29	HLB 32	HLB 40	HLB 67
art no		350.321.010	350.321.012	350.321.017	350.321.013	350.321.014	350.321.015
max. working pressure	bar/Mpa	8 / 0.8	8 / 0.8	8 / 0.8	8 / 0.8	8 / 0.8	8 / 0.8
max. inflation height	mm	290	215	348	380	405	520
thickness incl. profile	mm	25	25	25	25	25	25
max. lifting capacity	kN/t	200 / 20.4	240 / 24.5	300 / 30.6	320 / 32.6	400 / 40.8	670 / 68.3
air content (8 bar)	l	189	216	373	450	558	1206
water content (8 bar)	l	21	24	41.5	50	62	134
min. bursting pressure	bar/Mpa	32 / 3.2	32 / 3.2	32 / 3.2	32 / 3.2	32 / 3.2	32 / 3.2
weight, ready for use	kg	6.7	9.5	9.8	13.0	15.1	23.5
dimensions (LxW)	mm	508 x 508	1000 x 310	611 x 611	658 x 658	714 x 714	903 x 903

Diagram 1 - HLB 1 up to 5



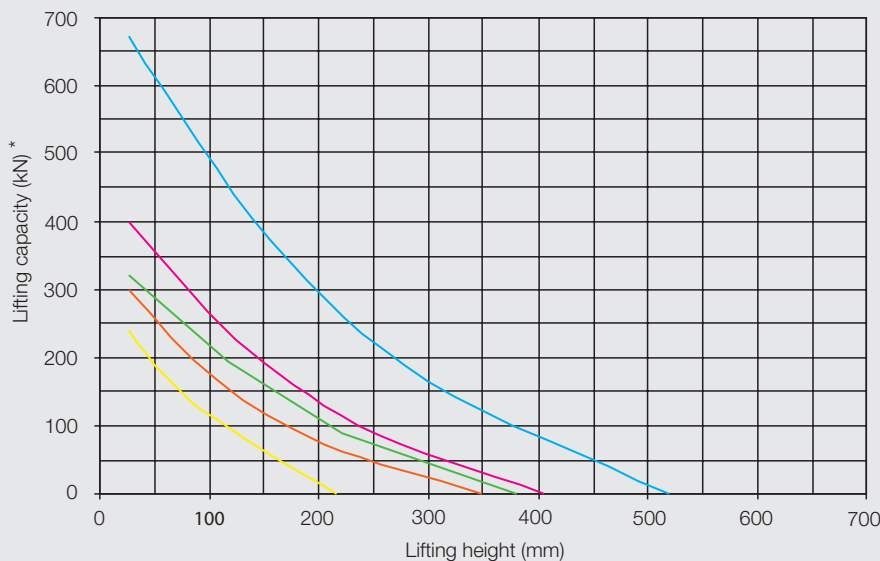
HLB 1
HLB 3
HLB 5

Diagram 2 - HLB 10 up to 20



HLB 10
HLB 12
HLB 18
HLB 20

Diagram 3 - HLB 24 up to 67



HLB 24
HLB 29
HLB 32
HLB 40
HLB 67

* Actual lifting capacity can deviate 10%



Features & benefits



- Flexible
- 4:1 safety ratio

Standard supplied with



- Male and female air coupler

Available on request









- Different lengths and colours

Lifting Bags - Hoses










model	5 YU	5 BU	5 RU	10 YU	10 BU	10 RU
art no	350.572.006	350.572.007	350.572.008	350.572.009	350.572.011	350.572.012
max. working pressure bar/Mpa	16 / 1.6	16 / 1.6	16 / 1.6	16 / 1.6	16 / 1.6	16 / 1.6
color	yellow	blue	red	yellow	blue	red
length m	5	5	5	10	10	10
temperature range °C	-20 + 80	-20 + 80	-20 + 80	-20 + 80	-20 + 80	-20 + 80





Lifting Bags - Operating Valves

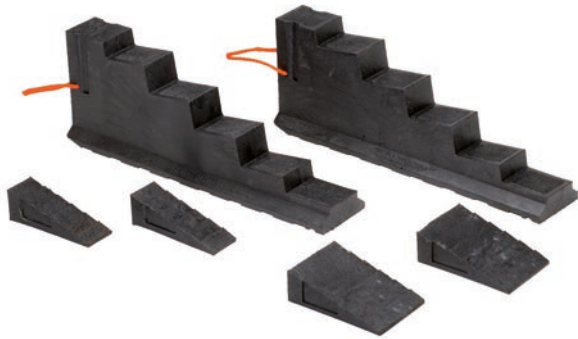

image	description	model	art no
	Single control unit • For the control of 1 high-pressure lifting bag • Safety valves set at 8.5 bars	SCV 10 U	350.582.042
	Double control unit • For the control of 2 high-pressure lifting bags • Safety valves set at 8.5 bars	DCV 10 U	350.582.034
	Triple control unit • For the control of 3 high-pressure lifting bags • Safety valves set at 8.5 bars	TCV 10 U	350.582.059
	Quadruple control unit • For the control of 4 high-pressure lifting bags • Safety valves set at 8.5 bars	QCV 10 U	350.582.060
	Synthetic control box • For operation of 2 lifting bags • Safety valves set at 8.5 bar	HDC 10 AU	350.182.003
	Synthetic control box • For operation of 2 lifting bags • Safety valves set at 0,85 MPa	HDC 10 AJU	350.182.004

Lifting Bags - Accessories


image	description	model	art no
	Shut-off hose with safety <ul style="list-style-type: none"> To close high-pressure lifting bags while remaining under pressure in order to use hose and air source elsewhere 	-	350.582.035
	Air bottle, 200 bar, 6 litres <ul style="list-style-type: none"> For use with all air operated tools and pumps 	-	350.581.086
	Air bottle, 300 bar, 6 litres <ul style="list-style-type: none"> For use with all air operated tools and pumps 	-	350.581.096
	Connection piece <ul style="list-style-type: none"> For connection of 2 air bottles 200 bar 	-	350.582.420
	Connection piece <ul style="list-style-type: none"> For connection of 2 air bottles 300 bar 	-	350.582.430
	Pressure reducer <ul style="list-style-type: none"> For both 200 and 300 air bottles Complete with hose 2 m 	PRV 823 AU	350.182.002
	Adapter set <ul style="list-style-type: none"> Synthetic carrying/storage case with various adapters for connection high-pressure lifting bags on various air sources 	UAS 10	350.582.050

Lifting Bags - Control Sets


image	description	model	art no
	Air control set • Synthetic orange carrying/storage case with control box, hoses, shut-off hose, pressure reducer and connection piece for air bottles 200 bar	HCS 10 U_200	350.582.435
	Air control set • Synthetic orange carrying/storage case with control box, hoses, shut-off hose, pressure reducer and connection piece for air bottles 300 bar	HCS 10 U_300	350.582.038
	Air control set • Synthetic orange carrying/storage case with control unit, hoses, shut-off hose, pressure reducer and connection piece for air bottles 200 bar	DCS 10 U_200	350.582.436
	Air control set • Synthetic orange carrying/storage case with control unit, hoses, shut-off hose, pressure reducer and connection piece for air bottles 300 bar	DCS 10 U_300	350.582.039



Set A



Features & benefits

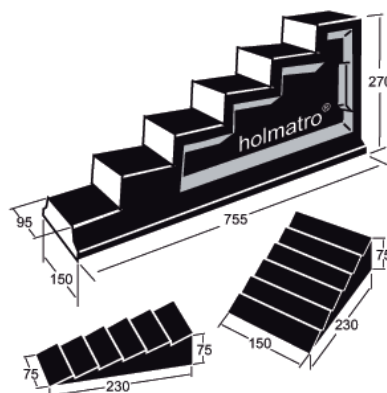
- Environment-friendly
 - Made of recycled polyethylene
 - 100% re-usable
- Longer life span than wood; virtually indestructible through one piece moulding
- Non-absorbent material; total resistance to water and oil
- Stackable; non-slip with unique surface profile design
- Extra grip due to elasticity of material under load
- Higher surface pressure allowed; supports 100 kg/cm² in all directions
- Lightweight; floats on water
- Safe; no splintering

Standard supplied with

- 2 x 1 step chock, 6.3 kg (150.563.060)
- 2 x 1 wedge small, 0.5 kg (150.563.049)
- 2 x 1 wedge large, 1.0 kg (150.563.050)

Chocks And Blocks - Set A

model	Set A	
art no	150.562.010	
weight, ready for use	kg	15.6





Set B



Features & benefits



- Environment-friendly
 - Made of recycled polyethylene
 - 100% re-usable
- Longer life span than wood; virtually indestructible through one piece moulding
- Non-absorbent material; total resistance to water and oil
- Stackable; non-slip with unique surface profile design
- Extra grip due to elasticity of material under load
- Higher surface pressure allowed; supports 100 kg/cm² in all directions
- Lightweight; floats on water
- Safe; no splintering

Standard supplied with

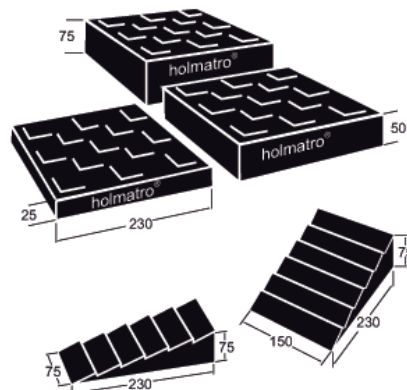


- 2 x 1 wedge small, 0.5 kg (150.563.049)
- 2 x 1 wedge large, 1.0 kg (150.563.050)
- 2 x 1 lock block low, 1.0 kg (150.563.061)
- 2 x 1 lock block medium, 2.0 kg (150.563.071)
- 2 x 1 lock block high, 3.0 kg (150.563.073)

Chocks And Blocks - Set B



model	Set B	
art no	150.562.004	
weight, ready for use	kg	15.0





Features & benefits



- Made of cast iron; resistant to continuous heavy operating conditions
- Unique ratchet handle for engagement both wheel and plunger
- Self-locking; for safe working
- Robust; can be used close to welding works and under water
- Low maintenance
- A range of 13 models with different capacities and stroke lengths
- Almost all jacks have a handle

Standard supplied with



- Handle bar

Traversing Beds
Base Plates

page 123
page 125



Mechanical Tools - Jacks

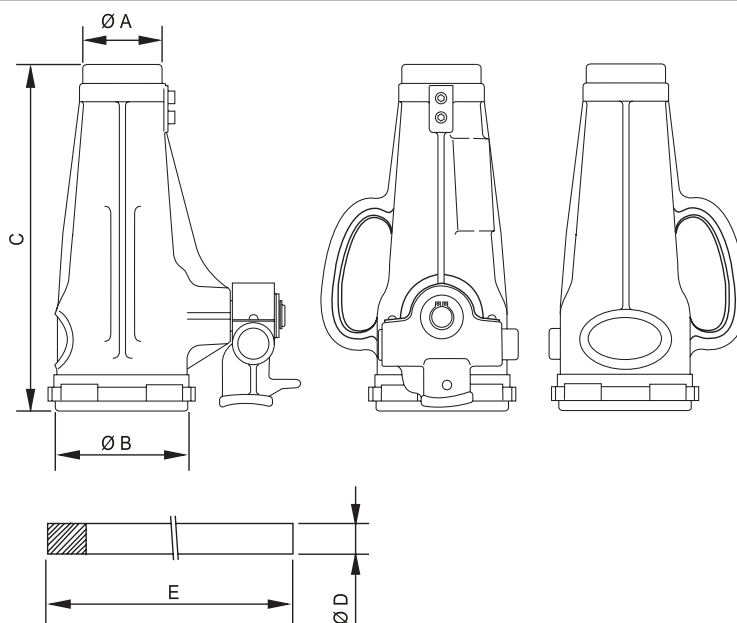


model	JJ 1015	JJ 1513	JJ 2513	JJ 2525	JJ 2533	JJ 3020
art no	200.401.001	200.401.011	200.401.021	200.102.001	200.102.005	200.102.002
tonnage	t	10	15	25	25	30
stroke length	mm	150	125	125	250	330
closed height	mm	280	255	255	395	485
capacity	kN/t	98.1 / 10	147.2 / 15	245.3 / 25	245.3 / 25	294 / 30
weight, ready for use	kg	12.0	12.0	16.0	21.0	25.0

Mechanical Tools - Jacks (dimensions)



model	JJ 1015	JJ 1513	JJ 2513	JJ 2525	JJ 2533	JJ 3020
dimension A	mm	65	63	77	77	95
dimension B	mm	108	113	127	127	148
dimension C	mm	280	255	255	395	485
dimension D	mm	25	25	25	25	25
dimension E	mm	600	600	700	700	700



Mechanical Tools - Jacks

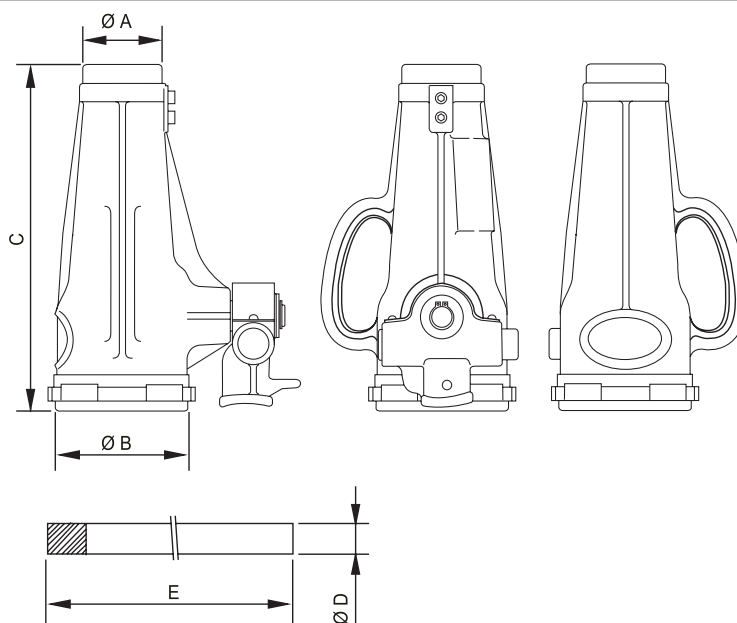


model	JJ 3513	JJ 3525	JJ 3535	JJ 5013	JJ 5025	JJ 5035
art no	200.401.031	200.102.003	200.102.006	200.401.041	200.102.004	200.102.007
tonnage	t	35	35	50	50	50
stroke length	mm	130	250	350	130	250
closed height	mm	280	410	535	290	445
capacity	kN/t	343.4 / 35	343.4 / 35	343.4 / 35	490.5 / 50	490.5 / 50
weight, ready for use	kg	24.0	32.0	37.0	31.0	42.0

Mechanical Tools - Jacks (dimensions)



model	JJ 3513	JJ 3525	JJ 3535	JJ 5013	JJ 5025	JJ 5035
dimension A	mm	87	87	105	105	105
dimension B	mm	147	147	166	166	166
dimension C	mm	280	410	535	290	445
dimension D	mm	32	32	32	32	32
dimension E	mm	700	700	700	800	800



Mechanical Tools - Jacks

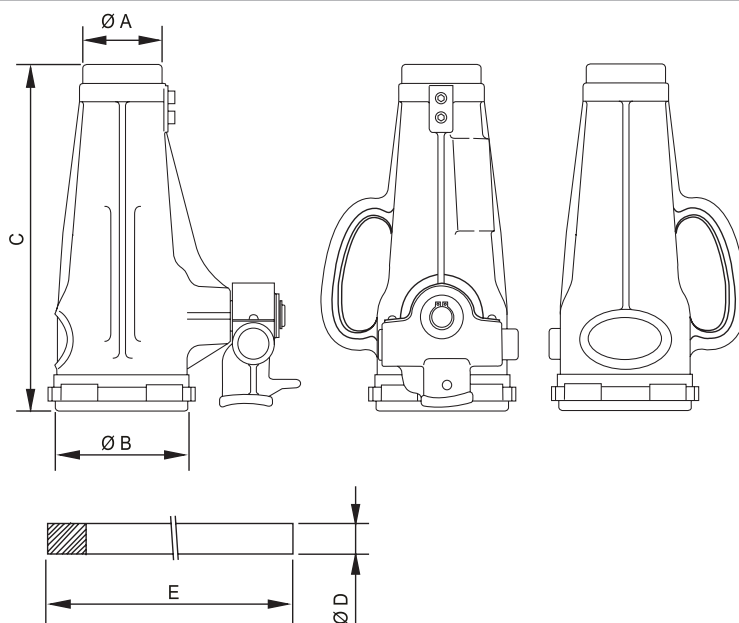


model	JJ 10011
art no	200.401.051
tonnage	t 100
stroke length	mm 105
closed height	mm 310
capacity	kN/t 981 / 100
weight, ready for use	kg 75.0

Mechanical Tools - Jacks (dimensions)



model	JJ 10011
dimension A	mm 127
dimension B	mm 235
dimension C	mm 310
dimension D	mm 32
dimension E	mm 1500




Features & benefits

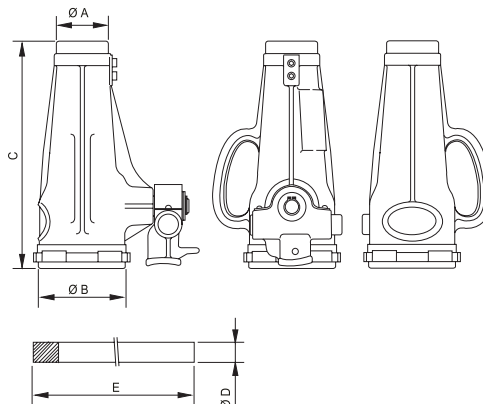

- Compact and lightweight construction; easy to work with and better for the welfare of your employees
- Special sliding pad instead of bearing
- Self-locking; for safe working
- Extendable handle bar
- All jacks have a handle

Mechanical Tools - Jacks - Aluminium


model		AJ 1008	AJ 1510	AJ 2510
art no		200.401.004	200.401.003	200.401.002
tonnage	t	10	15	25
stroke length	mm	80	100	100
closed height	mm	175	200	200
capacity	kN/t	100 / 10.2	150 / 15.3	250 / 25.5
weight, ready for use	kg	6.1	6.8	9.5

Mechanical Tools - Jacks - Aluminium (dimensions)


model		AJ 1008	AJ 1510	AJ 2510
dimension A	mm	58	58	73
dimension B	mm	102	102	122
dimension C	mm	175	200	200
dimension D	mm	27	27	30
dimension E	mm	575	575	675





PL 2510

Features & benefits

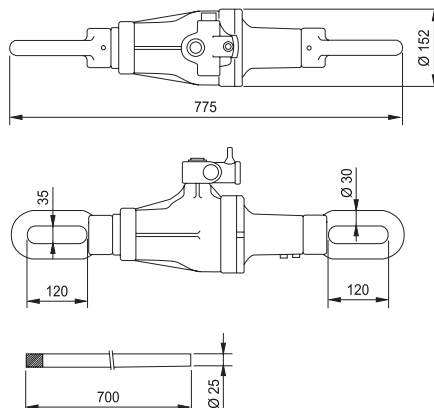


- Made of cast iron; resistant to continuous heavy operating conditions
- Unique ratchet handle for engagement both wheel and plunger
- Pulling eyes and an handle bar
- Self-locking; for safe working
- Robust; can be used close to welding works and under water
- Usable in all positions
- Low maintenance

Mechanical Tools - Pulling Jack



model	PL 2510	
art no	200.421.001	
tonnage	t	25
stroke length	mm	100
retracted length	mm	775
capacity	kN/t	245.3 / 25
weight, ready for use	kg	32.0





NJ 0615

Features & benefits

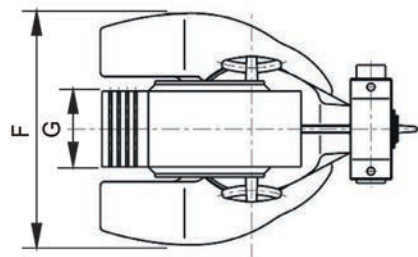
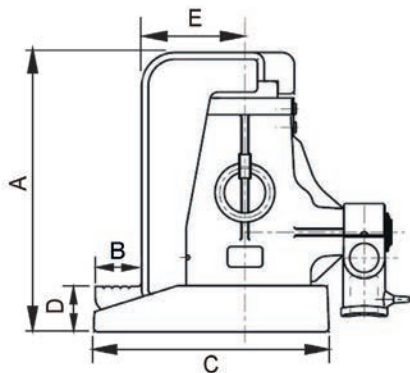

- Made of cast iron; resistant to continuous heavy operating conditions
- Unique ratchet handle for engagement both wheel and plunger
- Self-locking; for safe working
- Robust; can be used close to welding works and under water
- Low maintenance

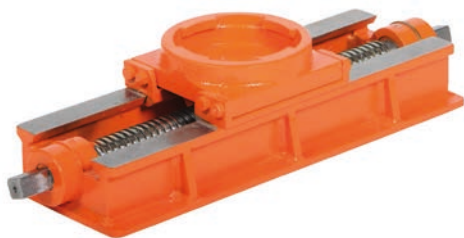
Mechanical Tools - Toe Jacks


model		NJ 0615	NJ 1013	NJ 1513	NJ 2513
art no		200.102.022	200.102.023	200.102.024	200.102.025
tonnage	t	6	10	15	25
capacity	kN/t	60 / 6.1	100 / 10.2	150 / 15.3	250 / 25.5
weight, ready for use	kg	23.0	29.0	38.0	60.0

Mechanical Tools - Toe Jacks (dimensions)


model		NJ 0615	NJ 1013	NJ 1513	NJ 2513
dimension A	mm	310	290	297	332
dimension B	mm	45	50	50	55
dimension C	mm	208	227	242	280
dimension D	mm	30	40	45	55
dimension E	mm	85	93	101	123
dimension F	mm	195	210	230	275
dimension G	mm	70	75	80	90





TB 1030

Features & benefits

- Made of cast iron; resistant to continuous heavy operating conditions
- Screw shaft and handle bar; for easy operating
- Self-locking; for safe working
- Robust; can be used close to welding works and under water
- Low maintenance

Additional information

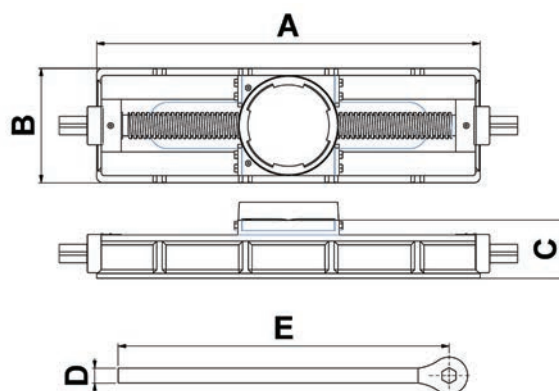
ATTENTION: Cannot be used with JJ 10011, Aluminium Mechanical jacks and Mechanical Toe jacks!

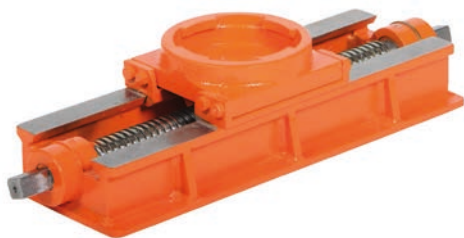
Mechanical Tools - Accessories - Traversing Beds

model	TB 1030	TB 1530	TB 2530	TB 2545	TB 3530	TB 3545
art no	200.102.008	200.102.009	200.102.010	200.102.011	200.102.012	200.102.013
suitable for jack	JJ 1015	JJ 1513	JJ 25**	JJ 25**	JJ 30** / JJ 35**	JJ 30** / JJ 35**
max. horizontal displacement	mm 300	300	300	450		450
weight, ready for use	kg 20.0	20.0	25.0	31.0	33.0	38.0

Mechanical Tools - Accessories - Traversing Beds (dimensions)

model	TB 1030	TB 1530	TB 2530	TB 2545	TB 3530	TB 3545
dimension A	mm 465	465	470	620	505	655
dimension B	mm 165	165	185	185	200	200
dimension C	mm 85	85	90	90	97	97
dimension D	mm 24	24	30	30	30	30
dimension E	mm 535	535	600	600	600	600





TB 5030

Features & benefits



- Made of cast iron; resistant to continuous heavy operating conditions
- Screw shaft and handle bar; for easy operating
- Self-locking; for safe working
- Robust; can be used close to welding works and under water
- Low maintenance

Additional information



ATTENTION: Cannot be used with JJ 10011, Aluminium Mechanical jacks and Mechanical Toe jacks!

Mechanical Tools - Accessories - Traversing Beds

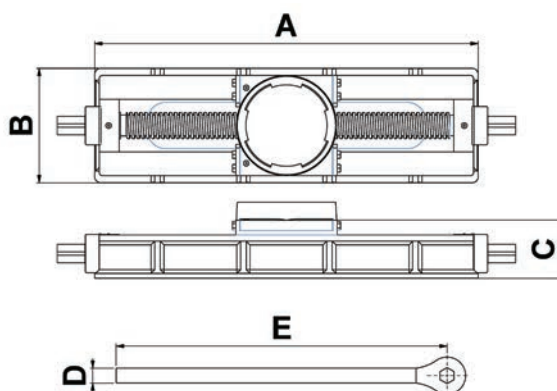


model	TB 5030	TB 5045
art no	200.102.014	200.102.015
suitable for jack	JJ 50**	JJ 50**
max. horizontal displacement	mm 300	450
weight, ready for use	kg 43.0	66.0

Mechanical Tools - Accessories - Traversing Beds (dimensions)



model	TB 5030	TB 5045
dimension A	mm 530	670
dimension B	mm 210	220
dimension C	mm 108	128
dimension D	mm 30	30
dimension E	mm 600	600





SB 10

Features & benefits



- Made of cast iron; resistant to continuous heavy operating conditions
- Robust; can be used close to welding works and under water
- Low maintenance

Additional information



ATTENTION: Cannot be used with JJ 10011, Aluminium Mechanical jacks and Mechanical Toe jacks!

Mechanical Tools - Accessories - Base Plates

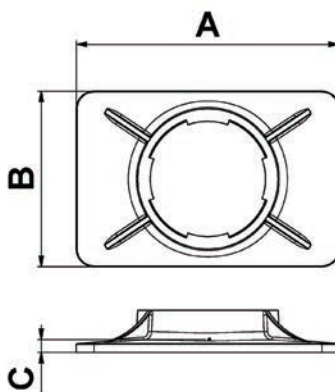


model	SB 10	SB 15	SB 25	SB 35	SB 50
art no	200.102.016	200.102.017	200.102.018	200.102.020	200.102.021
suitable for jack	JJ 1015	JJ 1513	JJ 25**	JJ 30** & JJ 35**	JJ 50**
weight, ready for use	kg 2.0	5.0	7.5	9.5	20.0

Mechanical Tools - Accessories - Base Plates (dimensions)



model	SB 10	SB 15	SB 25	SB 35	SB 50
dimension A	mm 220	240	300	300	400
dimension B	mm 180	190	200	220	300
dimension C	mm 10	12	15	18	19





W 50



Features & benefits



- Unloads in one go with maximum load
- Robust; resistant to continuous heavy operating conditions
- Can be used close to welding works
- Low maintenance

Ship Wedges



model	W 50	W 80
art no	500.501.050	500.501.080
max. height	mm 225	340
min. height	mm 200	275
capacity	kN/t 490.5 / 50	784.8 / 80
weight, ready for use	kg 29.0	64.5
dimensions (AxBxC)	mm 390 x 255 x 200	570 x 345 x 275

